

# Company Profile



Advanced Connection Technology Ltd

ACTT



# CONTENTS

1

About us

2

Design & product application

3

Quality & Manufacturing

4

Corporate culture





## About us

**Advanced Connection Technology Ltd. is located in Shenzhen, China. CACT is a company which mainly produces various types of automotive PCBA modules, automotive wiring harnesses and peripheral products of automotive connector.**

**CACT is a national high-tech enterprise integrating product design, development, manufacturing and processing. CACT adheres to customer demand-oriented, continuous innovation and quick response, committed to providing customers with high-quality and efficient products and services on a global scale.**

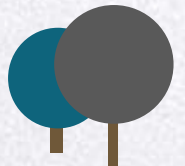
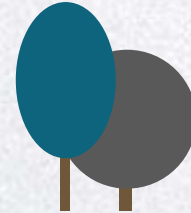
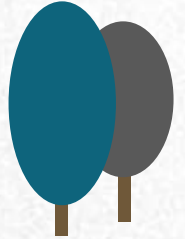
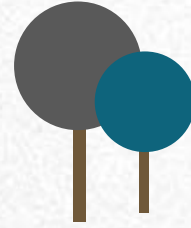


1. Factory was founded in 2000
2. Floor space :7267 m<sup>2</sup>
3. Total number of employees : 300
4. production line :
  - Modules 14 ,
  - Automotive wiring harnesses 8
  - Connectors15, medical products 1
- 5.Monthly capacity :
  - 5.1. Module ( PCBA ) : 2KK/M
  - 5.2. Automotive wiring harnesses : 1KK/M
  - 5.3. Connector : 5KK/M
  - 5.4. metal mold : 12sets/M
  - 5.5. Plastic mold : 10sets/M
- 6.Main products :
  - USB modules / automotive wiring harnesses / automotive connector etc.
7. Product sales : Twenty-four million dollars



# CACT History

- 2000----Established the factory
- 2003----Passed ISO 9001(2000 version) Qualification Certification
- 2004----Passed ISO 14001 Qualification Certification
- 2007----Passed TS 16949:2002 Qualification Certification
- 2007----Won the automotive client: Casco
- 2010----Won the automotive client: TECVOX
- 2011----Won the automotive client: Chrysler/Fiat/GM
- 2012----Won the automotive client: Harman
- 2015----Company listing
- 2016----Won automotive client: GAC Trumpchi
- 2016----Passed IATF16949:2016及ISO13485:2016 Qualification Certification
- 2017----Won the honor of "State High-tech Enterprise"
- 2018----Won the automotive client: GAC New Energy
- 2019----Passed AS9100 : 2016 Qualification Certification
- 2022----Won automotive client: BAIC

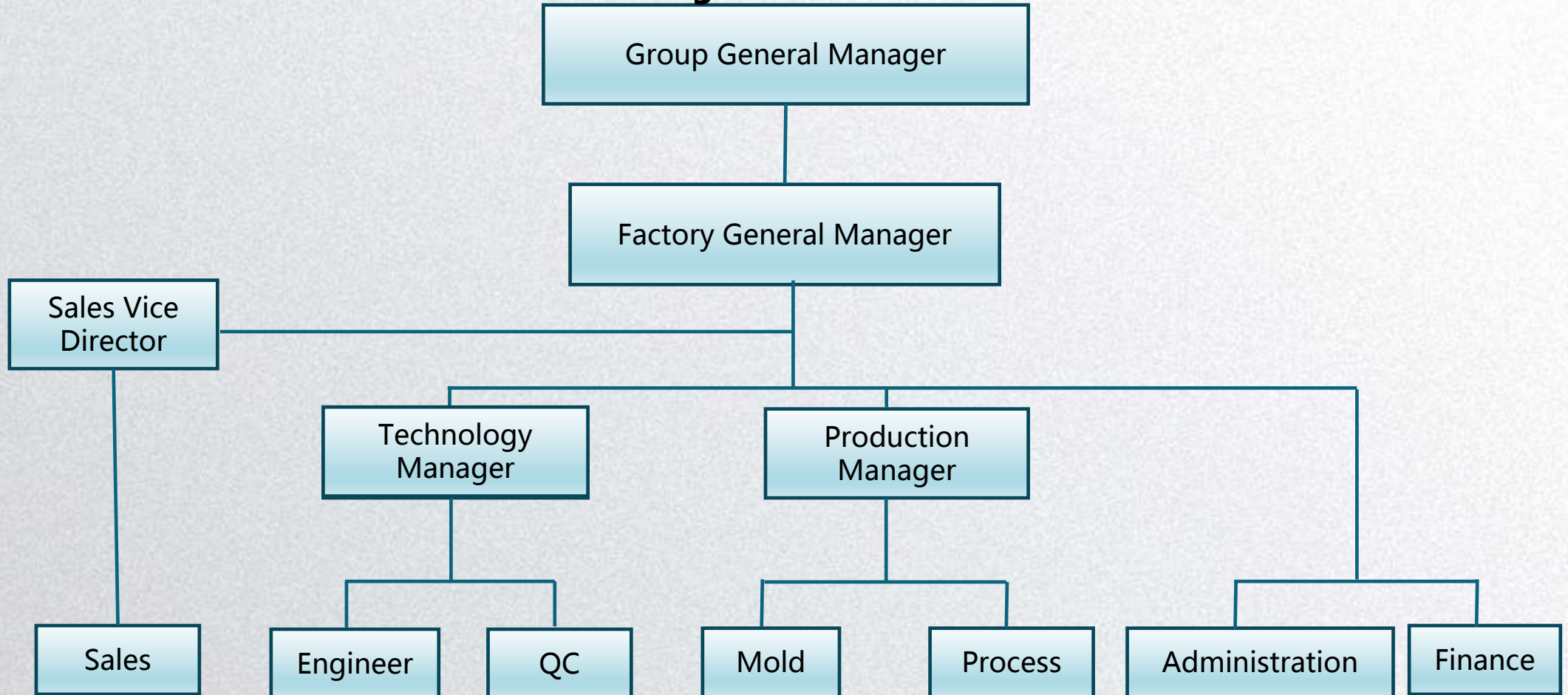






# Organization Chart

## Advanced Connection Technology Inc. Management Structure





# Marketing network



**Customer - oriented**

**Our products are  
exported to  
Southeast Asia,  
Europe, America, etc.**



## Automotive customers

CHRYSLER



MASERATI



广汽传祺



广汽埃安



蔚来



TECVOX



BMW



ALFA ROMEO



CASCO



法雷奥



中国一汽



HARMAN



小鹏



Jabil



FIAT

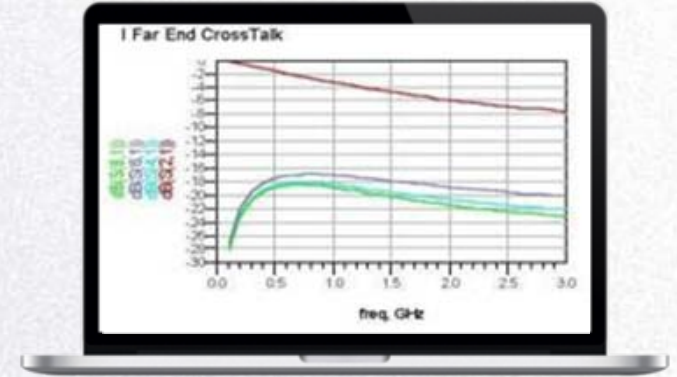
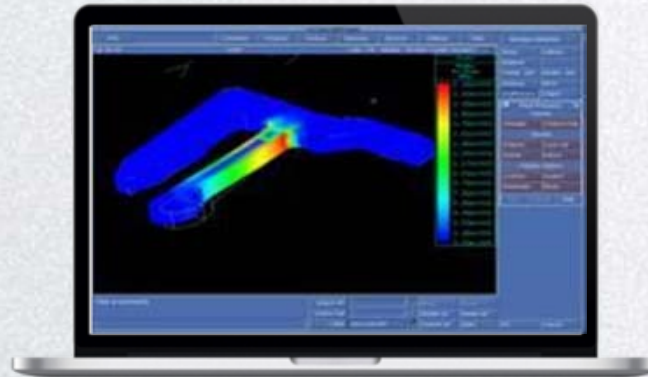






## Team strength

- 1、 Professional research and development capability
- 2、 Professional development software:AutoCad, Solidworks, Pro-E
- 3、 Advanced simulation software:Moldflow, MSC.AFEA, ANSYS



International  
professional design  
Mold design &  
manufacturing  
ability

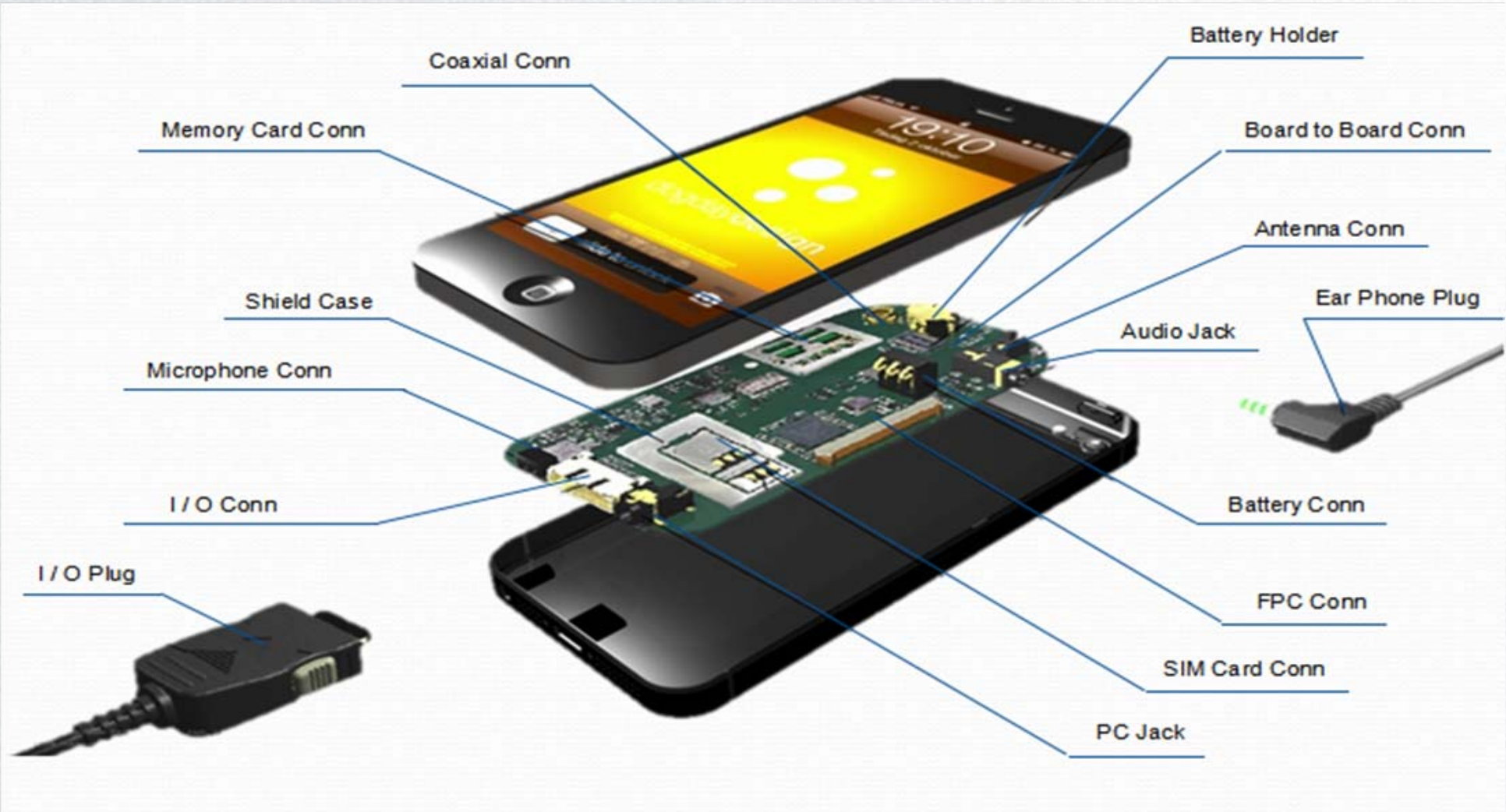
customize products  
capability  
Automated design  
capability

High precision machining  
equipment  
Production flexibility



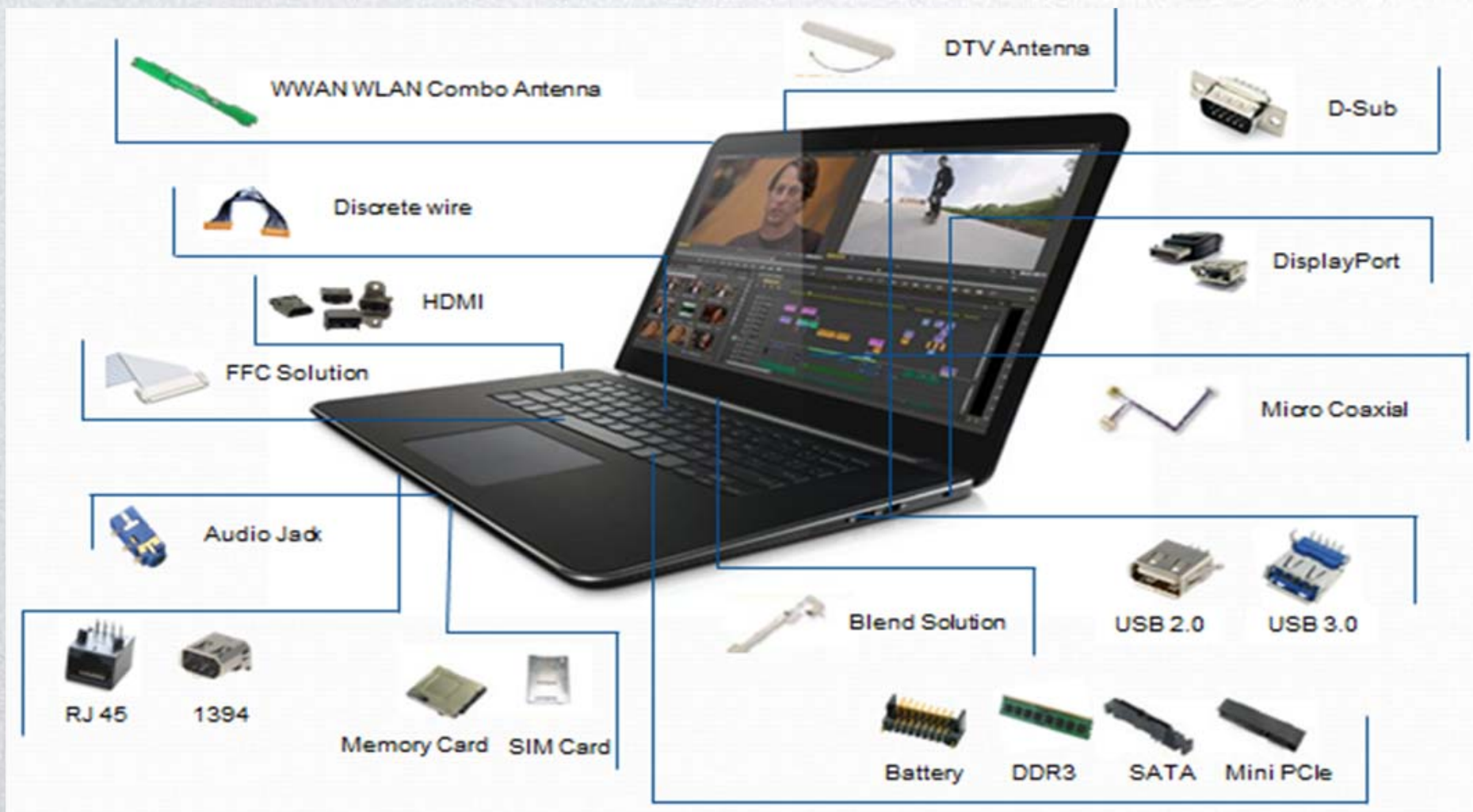


# Products on Mobile phone





# Products on Notebook







# Products on automobiles

1. Entertainment system wiring harness and modules
2. Communication system wiring harness
3. Navigation wiring harness
4. Vehicle information modules
5. Second generation vehicle-mounted diagnostic system





# Products Application : PCBA modules

**GAC GS4**



**GAC GA8&GS3POWER&GS5&GS8/  
EMPOW**





# Products Application : PCBA modules

**GAC M6/M8**



**AION S/AION V/AION Y/AION LX**



# Products Application : PCBA modules

**M161 CUU Maserati Levante S**



**Alfa Romeo Giulietta**





# Products Application : PCBA modules

**ZD – Dodge Viper**



**DS – Dodge Ram**



# Products Application : PCBA modules

**WK CUASD– Jeep Grand Cherokee**



**WD CUASD – Dodge Durango**







# Products Application : PCBA modules

RT CUU – Jeep



330 CUA–Fiat





# Products Application : PCBA modules

Function	Carplay3.0+5V/2.4A+SD card	5V/2.4A+5V/3A Charger	5V/3A Charger
Picture			
Function	5V/2.4A+PD (9V/2A) Charger	PD (60W max) Charger	PD Charger +Data transmission
Picture			





# Products Application: Automotive wiring harness

## Vehicle-mounted USB/Mini USB Cable



Chrysler DS Uscar cable



Chrysler DS Uscar cable



GM USB cable

## HDMI cable



Chrysler Town and Country



Korea ssangyong chairman



HDMI cable assembly



# Products Application: Automotive wiring harness

## Wire Harness cable



Mazda Multi media Box



FORD Mondeo Lighting System



Porsche Lighting System

## HSD/Fakra cable







# Products Application: Automotive wiring harness & connector

## Other Cable series of vehicle-mounted



OBDII TO DSUB cable



Switch cable for fire fighting car



Power cable (ISO 6pin Conn.)

## Automotive connector: Type C series





## Products Application: Automotive connector



USB vertical type



USB180° SMT TYPE



HDMI TYPE A



HDMI TYPE E



Uscar Mini USB Conn.



AUX Conn.



AUTO Conn. 12/4/2 Pin







# Quality System

RoHS&REACH  
ISO Certification



**ISO9001**  
Versions:2015



**IATF16949**  
Versions:2016



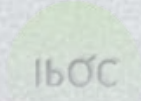
**ISO14001**  
Versions:2015



**ISO13485**  
Versions:2016



**AS 9100**  
Versions:2018



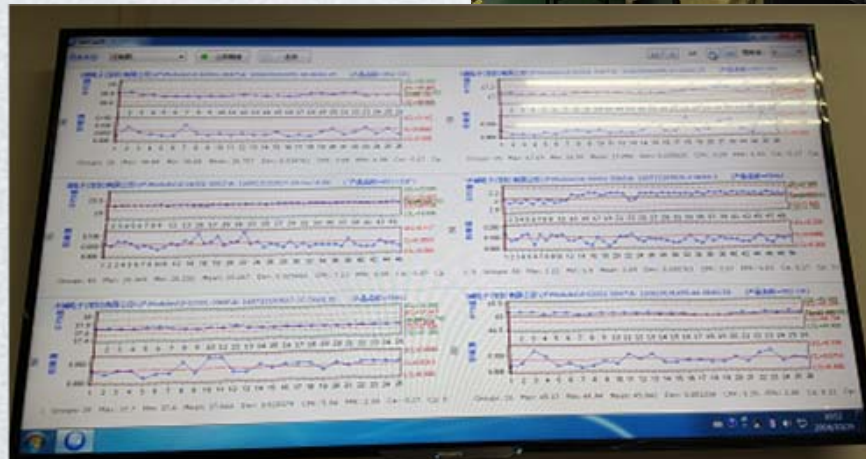
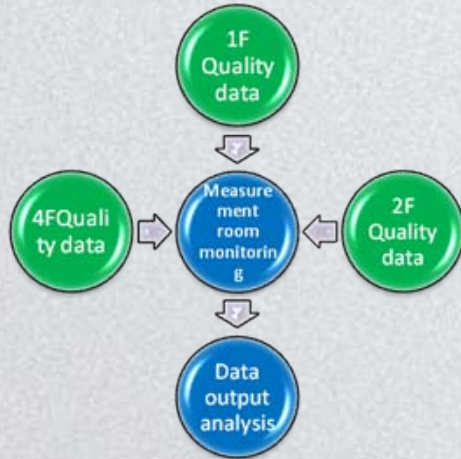
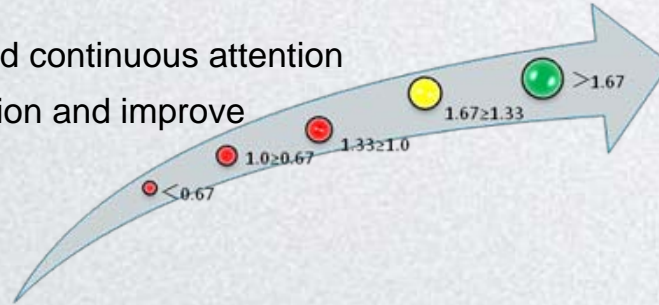


# Quality system - SPC system

Real-time SPC system: seamless connection with the measurement room automatic measurement system, automatic real-time SPC analysis of quality and process data for each period of time, early warning at the beginning of the trend change (automatically send mail step by step to notify the relevant personnel), can timely discover potential quality or process problems, so as to prevent and improve quality and process problems in advance.

## ■ Capability Index of CPK

- Result  $\geq 1.67$  PASS
- Result  $< 1.67$  Early warning and continuous attention
- Result  $< 1.33$  Stop the production and improve







## Quality system - MES system

MES traceability system links parts, machines, personnel, test results and products effectively through scanning, and uploads servers to achieve one-to-one traceability effectively. MES system can export online reports, automatically feed back the real data of production and quality to the production Kanban and server, and gradually realize paperless operation.

Tracking of staff, machine and material

Product tracking

Quality management

Production Kanban

Equipment management

# Manufacturing System- Andon System

Module production line tie-in Andon System

- ※ E-SOP System, Roll playing, Real-time notification
- ※ Automatic recording, tracking and statistics the abnormalities of production line

## Andon System Production Line Layout



## Operations Interface



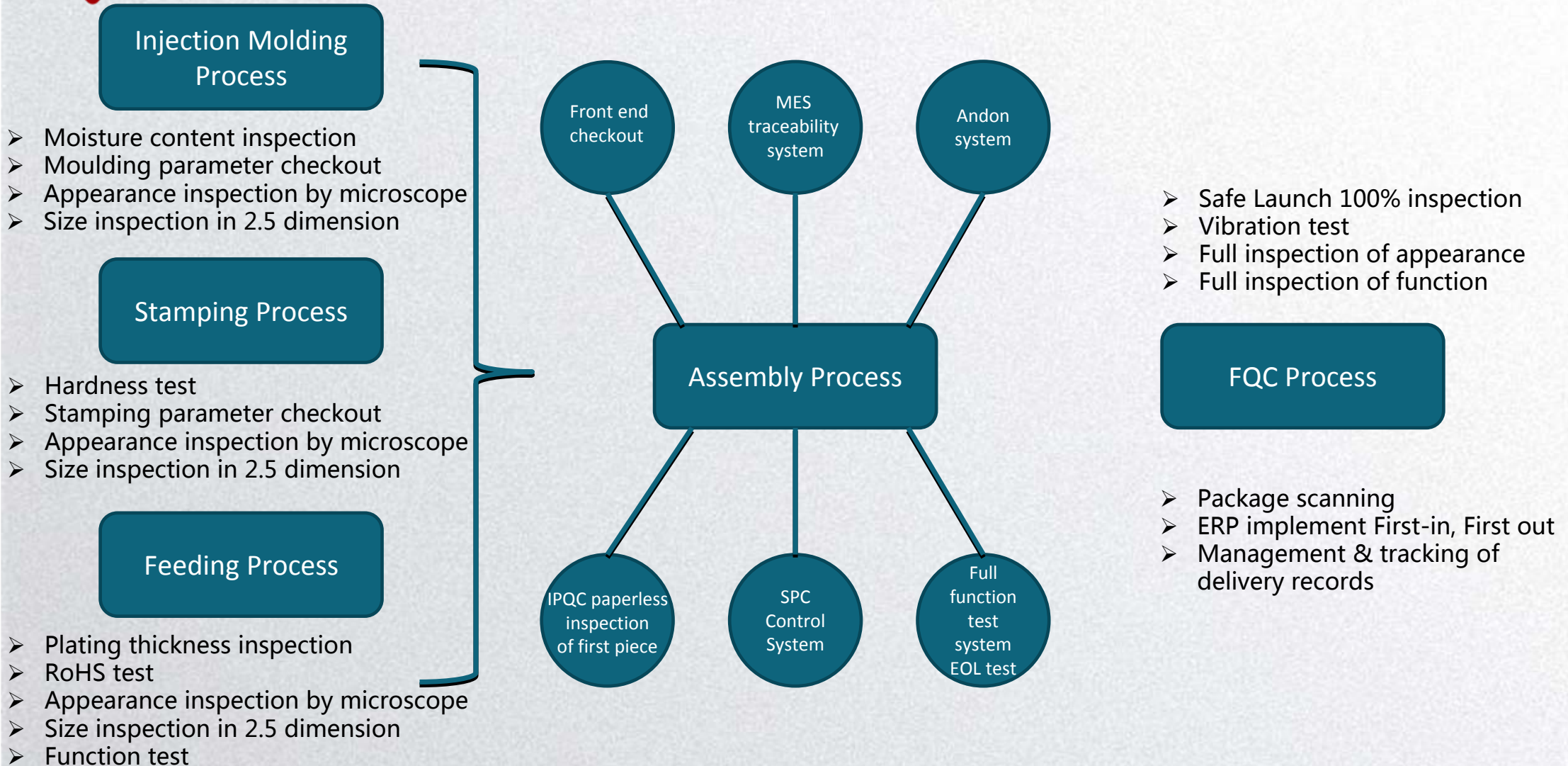
## Visual Integration Kanban







# Product Quality Control Process





# Laboratory equipment



Automatic inserting and pulling force testing machine



Durability Force Tester



Alcohol rubber friction testing machine



Hardness testing machines



Bend and sway test machine



Grinding and polishing experimental machine





# Laboratory equipment



Contact impedance tester



Voltage insulation tester



Function Generator



**XRF**



colorimeter



oscilloscope



# Laboratory equipment



**Constant temperature and humidity testing chamber**



**Mechanical vibration testing machine**



**Vehicle interference simulator ISO7637 system**



**Thermal shock testing chamber**



**Mechanical shock testing machine**

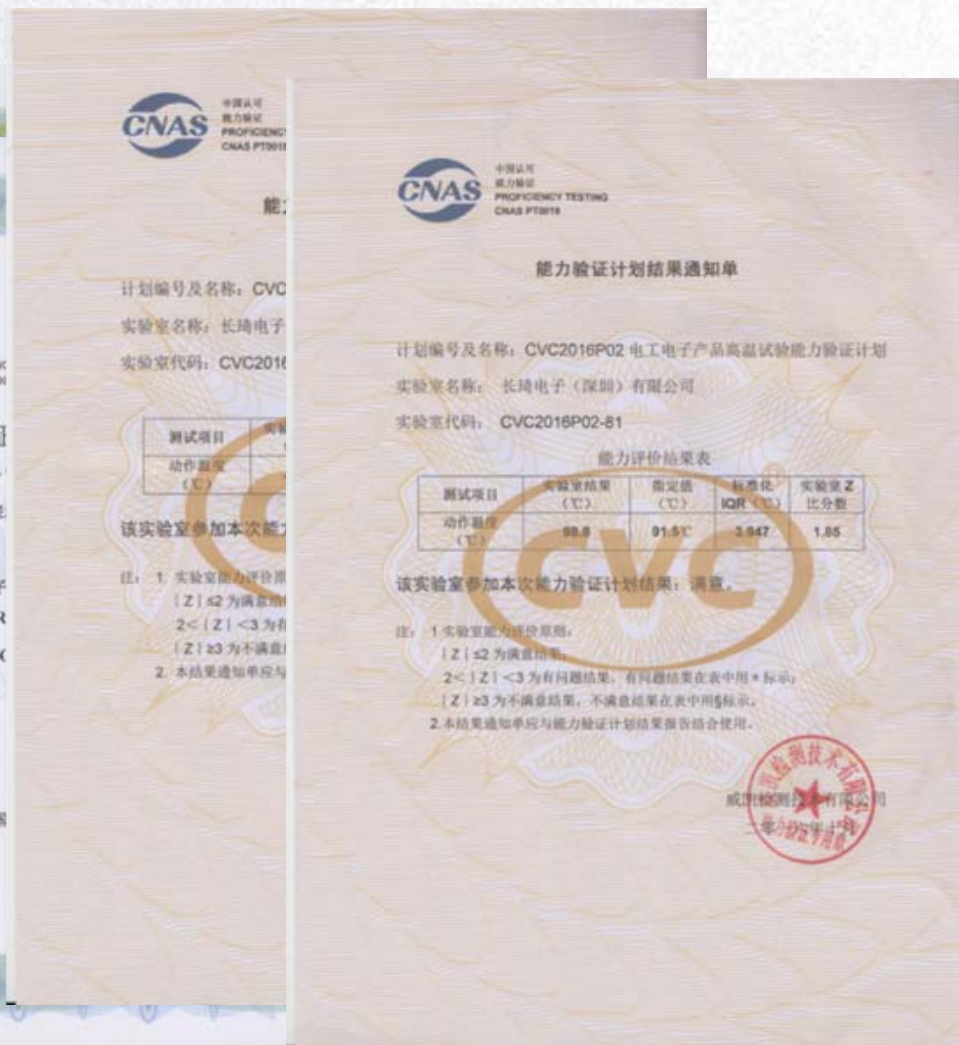


**Electrostatic discharge generator**





# Experiment ability





# Mold processing equipment

**Grinding  
machine**



**milling  
machine**



**Wire  
Cutting  
machine**



**EDM**

**Laser  
engraving  
machine**







# Manufacturing equipment



Automatic welding robot



Automatic wire cutting machine



USB connector automatic assembly machine



High frequency soldering



EOL tester



2.5D automatic measurer





# Manufacturing shop







# Manufacturing shop

We advocate the concept of "zero defects" and "one time to do things right", in strict accordance with the ISO/IATF16949 quality control standard production.







# High standard of warehouse management







# Corporate culture





# Win-win Cooperation

*THE END*